

Technical Document

# HSMR mortality indicators

Paul Aylin\*  
Alex Bottle\*  
Min Hua Jen\*  
Steven Middleton†

\* Dr Foster Unit at Imperial, Imperial College

† Dr Foster Intelligence

23<sup>th</sup> February 2010

# Contents

Contents	2
Overview	3
Methodology	3
1. Data sources	3
1.1 Data period	3
2. General data processing	3
2.1 Cleaning	3
2.2 Area-level deprivation	3
2.3 Trust mergers	3
3. Intelligent” data processing	4
3.1 Linkage	4
3.2 Diagnosis derivation	5
3.3 Outcome derivation	6
3.4 Derivation of additional parameters for risk adjustment	7
4. Risks	8
4.1 Denominator	8
4.2 Logistic regression models	8
4.3 Estimate of risk	9
4.4 Quality of risk model (the ‘C statistic’)	9
5. Calculation of HSMR	10
6. Changes in 2009	11
7. Relevant publications	12
Appendix A. Charlson comorbidity conditions	13

## Overview

Measures of survival are an important measure of the quality of care provided by hospitals. Florence Nightingale was one of the first people to identify the importance of measuring survival rates and in the 1860s, she highlighted the variation in survival rates for hospitals across London. Today, many clinicians routinely monitor the survival rates in their services, and use them to improve care.

The analyses are derived from routinely collected hospital data. The statistical process control charts have been adjusted to take into account a range of factors that can affect the survival rates, but which are beyond the control of the individual hospital, for example, the age and sex of the patient or whether they have another medical condition.

## Methodology

### 1. Data sources

Mortality indicators are based on the analysis of 13 years of inpatient and day case records from Hospital Episode Statistics (HES) for the period 1996/97 to 2005/06, and Secondary Uses Service (SUS) for 2006/07 to 2008/09. These are data that are routinely collected within the health service for administrative purposes and not specifically for clinical audit. There may be issues regarding coverage, completeness and accuracy that need to be considered when interpreting the results.

#### 1.1 Data period

Data are extracted for analysis through SUS by the Dr Foster Unit at Imperial College on the 9<sup>th</sup> of each month.

Please note all data years and derived values in this methodology (eg c statistics) are correct as of the date of this document but are subject to change over time as the data is refreshed monthly and the methodology updated yearly. Please contact Dr Foster Intelligence if you require the most up-to-date detail.

### 2. General data processing

#### 2.1 Cleaning

These data are cleaned according to established HES guidelines with one or two minor additions/modifications. More detailed information is available on request.

#### 2.2 Area-level deprivation

The population-weighted quintiles of the Carstairs deprivation score calculated by 2001 Census Output Area are then added to the data by matching on the patient's postcode. More detailed information is available on request.

#### 2.3 Trust mergers

As hospitals merge and services reorganised, provider codes (PROCEDURE) may

change from one year to the next. In order to track hospitals over time, the provider codes need to be unified, i.e. just one code needs to identify each trust throughout. To date, provider codes have been unified as of the trust status at June 1st 2008.

### 3. Intelligent” data processing

#### 3.1 Linkage

The data are in the form of consultant episodes (the continuous period during which the patient is under the care of one consultant), which need to be linked into admissions (or “spells”). Records are assumed to belong to the same person if they match on date of birth, sex and postcode (DOB, SEX, HOMEADD) as the NHS number is either not available or not recorded accurately enough across the whole period for which we have data. For the period from 2000/01 to 2004/05 we have used HESID as a patient identifier. This links patients together based on either their NHS number (with other fields added) or their local patient identifier (with other fields added). A detailed algorithm on how the HESID was derived by the Department of Health is available on request from the NHS Information Centre.

Only ages within the ranges 1-120 and 7001-7007 (special values to indicate age in months for children under 1 year) are considered valid. Duplicate records (those with the same combination of provider, date of birth, sex, postcode, date of admission and episode number (PROCEDURE, DOB, SEX, HOMEADD, EPISTART, EPIEND, EPIORDER), unfinished episodes, those with missing/invalid ADMIDATE and regular attenders (CLASSPAT=3,4) are excluded. Some spells have the same date of admission (ADMIDATE) but different dates of discharge (DISDATE). This is not valid unless the patient was discharged and readmitted on the same day: if not, the spell with the earliest DISDATE was arbitrarily taken to be the valid one. Episodes relating to the invalid spell are excluded at this stage. Remaining episodes are sorted by provider, date of birth, sex, postcode, date of admission, date of discharge and episode number (PROCEDURE, DOB, SEX, HOMEADD, ADMIDATE, DISDATE, EPIORDER). Episodes are not required to be in strict sequence, only in chronological order. For example, if the first one had EPIORDER=01, the second one had EPIORDER=03 and the last one of the same spell had EPIORDER=99, then the three episodes are treated just the same as if they were numbered 01, 02 and 03 (as most multi-episode spells are). However a spell must have at least one episode with EPIORDER=01 otherwise it is considered invalid and excluded. Spells with invalid length of stay (DISDATE < ADMIDATE) are also excluded.

Spells ending in transfer to another NHS hospital are linked together (“superspell”), allowing for a difference between discharge from the first trust and admission to the next trust of up to two days, using ADMIMETH= 81 or DISDEST/ADMISORC values of 49-53 (which refer to NHS providers).

Data come from a number of sources and episodes are linked across years according to the method described in Table 1. Episodes ending on or after 1<sup>st</sup> April 2008 are refreshed monthly on a cumulative basis.

Table 1

Stage	Year of EPIEND	Status	Data source	Patient identifier used for linkage	Orphaned FCEs in unfinished spells <sup>1</sup>	Superspells <sup>2</sup>
1	1996/97 to 1999/00	Frozen	HES	SEX +DOB +HOMEADD	Excluded <sup>3</sup>	Considered to be finished
2	2000/01 to 2005/06	Frozen	HES	HESID	Rolled forward to Stage 3	Considered to be finished
3	2006/07 to 2007/08	Frozen	SUS (Jan08 and Mar09 extracts) + Stage 2 orphans	SEX +DOB +HOMEADD	Rolled forward to Stage 4	Episodes in superspells ending in later years unlinked and rolled forward to Stage 4
4	2008/09 onwards	Monthly refresh	SUS (Cumulative from Apr08) + Stage 3 orphans	SEX +DOB +HOMEADD	Excluded	Considered to be finished

**Notes:-**

1 Spells which are missing an episode with a valid DISDATE or an episode with SPELEND="Y" and valid EPIEND.

2 Transfers are not linked across stage boundaries.

3 Episodes ending in later years related to these orphans will be linked into spells which are missing a first episode. These "widows" are also excluded.

**3.2 Diagnosis derivation**

We use the 56 diagnostic groups which contribute to 80% of in-hospital deaths in England. All 56 groups are listed in Table 2, and further information on the Clinical Classification System (including the ICD codes making up the groups) is available at <http://www.ahrq.gov/data/hcup/icd10usrqd.htm>.

For each spell we assign a diagnosis based on the primary diagnosis in the first episode of care. However, if the primary diagnosis is a vague symptom or sign we look to the second episode (of a multi-episode spell) to derive a diagnosis.

Table 2

CCS group	Description of CCS group	C statistics
2	Septicemia (except in labour)	0.799
12	Cancer of oesophagus	0.820
13	Cancer of stomach	0.816
14	Cancer of colon	0.835
15	Cancer of rectum and anus	0.849
17	Cancer of pancreas	0.770
19	Cancer of bronchus, lung	0.780
24	Cancer of breast	0.939
27	Cancer of ovary	0.848
29	Cancer of prostate	0.866
32	Cancer of bladder	0.921
38	Non-Hodgkin's lymphoma	0.817
39	Leukaemias	0.799
42	Secondary malignancies	0.809
43	Malignant neoplasm without specification of site	0.792
55	Fluid and electrolyte disorders	0.785

59	Deficiency and other anaemia	0.783
68	Senility and organic mental disorders	0.669
100	Acute myocardial infarction	0.749
101	Coronary atherosclerosis and other heart disease	0.873
103	Pulmonary heart disease	0.786
106	Cardiac dysrhythmias	0.844
107	Cardiac arrest and ventricular fibrillation	0.676
108	Congestive heart failure, nonhypertensive	0.668
109	Acute cerebrovascular disease	0.713
114	Peripheral and visceral atherosclerosis	0.891
115	Aortic, peripheral, and visceral artery aneurysms	0.851
117	Other circulatory disease	0.820
122	Pneumonia	0.857
125	Acute bronchitis	0.837
127	Chronic obstructive pulmonary disease and bronchiectasis	0.706
129	Aspiration pneumonitis, food/vomitus	0.713
130	Pleurisy, pneumothorax, pulmonary collapse	0.806
131	Respiratory failure, insufficiency, arrest (adult)	0.742
133	Other lower respiratory disease	0.826
134	Other upper respiratory disease	0.902
145	Intestinal obstruction without hernia	0.828
148	Peritonitis and intestinal abscess	0.863
149	Biliary tract disease	0.920
150	Liver disease, alcohol-related	0.702
151	Other liver diseases	0.829
153	Gastrointestinal haemorrhage	0.828
154	Noninfectious gastroenteritis	0.882
155	Other gastrointestinal disorders	0.890
157	Acute and unspecified renal failure	0.747
158	Chronic renal failure	0.881
159	Urinary tract infections	0.808
197	Skin and subcutaneous tissue infections	0.907
199	Chronic ulcer of skin	0.795
224	Other perinatal conditions	0.760
226	Fracture of neck of femur (hip)	0.746
231	Other fractures	0.825
233	Intracranial injury	0.798
237	Complication of device, implant or graft	0.833
245	Syncope	0.774
251	Abdominal pain	0.937

### 3.3 Outcome derivation

We define our death outcome when the patient dies in hospital at the end of their stay in hospital (superspell). The spell in which death occurs (DISMETH = 4 or 5) may be post-transfer, but deaths are assigned to all the trusts in the superspell.

### 3.4 Derivation of additional parameters for risk adjustment

Table 3

Parameter	Definition	Excluded if invalid
Admission method	If ADMIMETH = 11,12,13 in last episode of spell with valid ADMIMETH, then "Elective" else "Non-elective"	Yes, if no episodes in spell contain valid ADMIMETH
Age group	Age on admission in 5-year bands (<1 year,1-4,5-9,...90+)	Yes, if no episodes in spell contain valid age on admission
Year of discharge	Financial year of date of discharge at the end of the superspell	Yes, if no episodes in spell have either valid DISDATE or SPELEND="Y" and valid EPIEND
Deprivation quintile	Derived from postcode on the episode in the spell in the diagnosis dominant episode	No
Diagnosis subgroup	Based on official CCS sub-groups within each CCS group	n/a
Sex	Derived from the episode with the first valid value (1 or 2) of SEX, going backwards from the end of the spell.	Yes, if no episodes in spell contain valid SEX
Comorbidity (Charlson score)	<p>The CHARLSON score for a spell is calculated as the sum of the scores for each of the conditions (see Appendix A) in the diagnosis-dominant episode (a condition can only be counted once in a spell). This score is capped at 50.</p> <p>We have expanded the coding definition of some conditions such that more patients are identified as having those conditions.</p> <p>Only secondary diagnoses (DIAG2-DIAG14) are now considered.</p> <p>There is now greater variation in weights between conditions and the Charlson index (the sum of the weights) is treated as a continuous variable (limited to the range 0-50) for the purposes of risk adjustment.</p>	n/a
Emergency admissions in previous 12 months	Calculated as the number of superspells in the previous 365 days for the same patient (using the general pseudonymised patient identifier). This includes the current spell, if it is an emergency admission.	n/a
Palliative care	If any episode in the superspell has treatment function code 315 or contains Z515 in any of the diagnosis fields, then "Palliative" else "Non-palliative".	n/a
Month of admission		n/a
Ethnicity	White Mixed Asian or Asian British Black or Black British Other Ethnic Groups Other	No
Source of admission	Home - Initial spell and ADMISORC=19 Transfer (Acute) - Linked transfer from another acute NHS provider Other place - Initial spell and all other ADMISORC values Transfer (Non-acute) - Linked transfer from another non-acute NHS provider Transfer (Unknown) - ADMIMETH=81 or ADMISORC=49-53 but no previous spell found Birth - Initial spell and ADMIMETH=82-83 Transfer (Internal) - Linked transfer from this NHS provider Unknown (non-transfer) - ADMISORC=98-99	No

## 4. Risks

### 4.1 Denominator

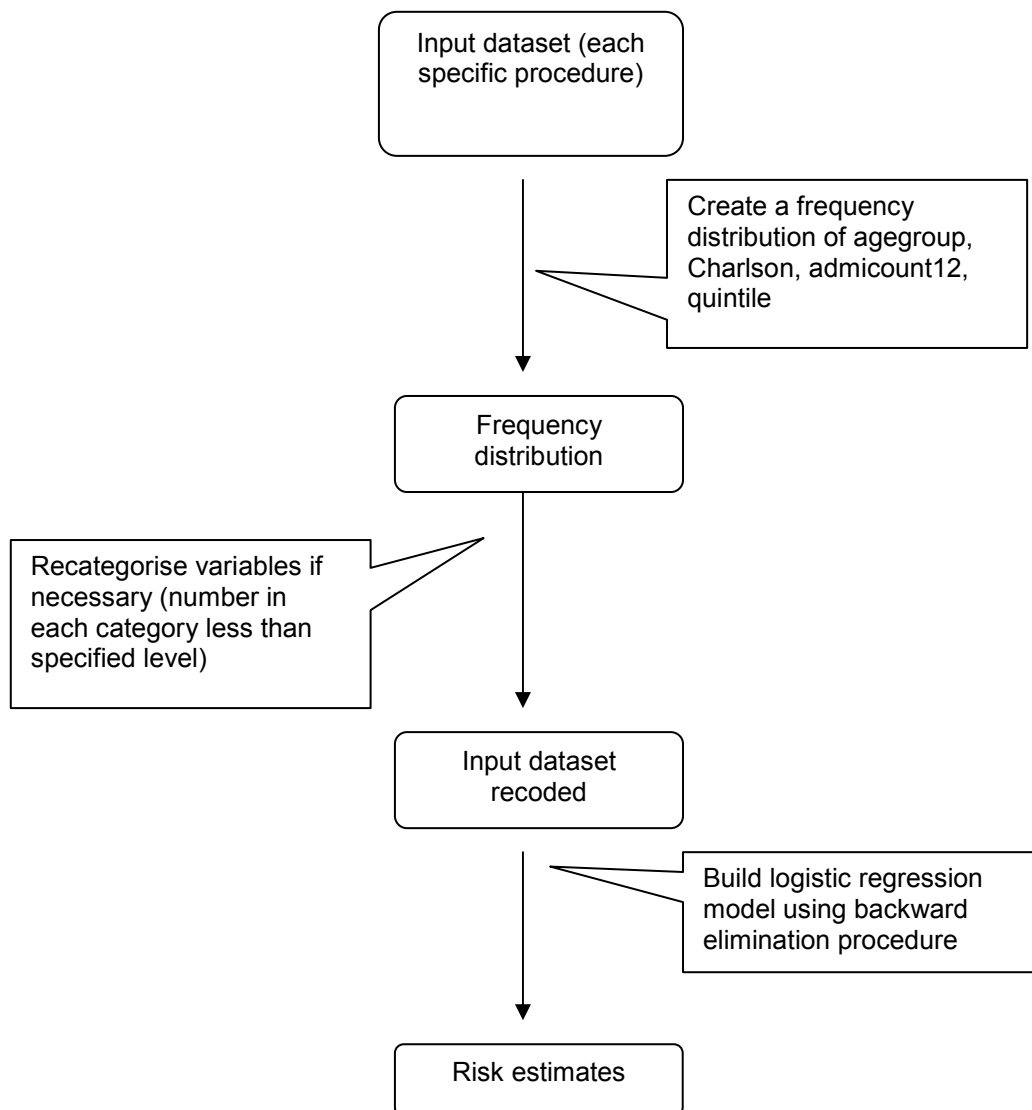
We exclude day cases (spells where CLASSPAT = 2 in first episode) from our risk models and where there is more than one spell with the same diagnostic group (CCS) in a superspell, we include only the first occurring spell.

### 4.2 Logistic regression models

For each diagnosis group (CCS) we derive predicted probabilities for inpatient in-hospital mortality by fitting logistic regression models using SAS V9.1. We apply SAS's inbuilt backwards elimination procedure for variable selection, which starts with a model including all the selected explanatory variables and then automatically removes the variable with smallest F-statistic at each step until all the non-significant variables (using a cut-off of  $P > 0.1$ ) have been excluded.

We use the variables defined in Table 3 as our predictors. We recategorise four variables – age group, deprivation, comorbidity and number of previous admissions – depending on the absolute number of events, so that each category contains at least 20 events. Starting from the first (lowest) category, we combine it with the next lowest category if it contains fewer than 20 events and continue combining until that total has been reached. We then inspect the next highest category and repeat the process as necessary. If the last category is left with fewer than 20 events then it is combined with the second last category as one group. Figure 1 shows the sequence of our approach.

Figure 1 The sequence of risk modelling



### 4.3 Estimate of risk

The risk estimate (R) for each inpatient is calculated from the table of log odds produced by the risk modelling process (Appendix B) as follows:

$$R = \exp(\text{sum}(\text{logodds})) / (1 + \exp(\text{sum}(\text{logodds})))$$

For day cases, R=0.

Risk estimates for data in years after the last year included in the risk model (currently 2008/09) are calculated using the log odds value for the last year in the model.

### 4.4 Quality of risk model (the 'C statistic')

The success of case-mix adjustment for accurately predicting the outcome

(discrimination) was evaluated using the area under the receiver operating characteristic curve (c statistic). The c statistic is the probability of assigning a greater risk of death to a randomly selected patient who died compared with a randomly selected patient who survived. A value of 0.5 suggests that the model is no better than random chance in predicting death. A value of 1.0 suggests perfect discrimination. In general, values less than 0.7 are considered to show poor discrimination, values of 0.7-0.8 can be described as reasonable and values above 0.8 suggest good discrimination. These c-statistics are given in table 2.

## 5. Calculation of HSMR

The SMR is a method of comparing mortality levels in different years, or for different sub-populations in the same year, while taking account of differences in population structure. The ratio is of (observed) to (expected) deaths, multiplied conventionally by 100. Thus if mortality levels are higher in the population being studied than would be expected, the SMR will be greater than 100.

For all of the 56 diagnosis groups, the observed deaths are the number that have occurred following admission (as recorded in CDS) in each NHS Trust during the specified time period.

The expected number of deaths in each analysis is the sum of the estimated risks of death.

Each HSMR is plotted on a funnel plot. Funnel plots (a type of statistical process control charts) are a graphical method used to assess variation in the data and are used to compare different trusts over a single time period. Funnel plots are so named because they use control limits which form a 'funnel' around the benchmark and reflect the expected variation in the data.

Each funnel plot has three lines:

- a centre line, drawn at the mean (the National average, RR=100)
- an upper control-limit (drawn three sigma above the centre line, upper 99.8 per cent control limit – upper red line)
- a lower control limit (drawn three sigma below the centre line - lower 99.8 per cent control limit)

Data points falling within the control limits are consistent with random or chance variation and are said to display 'common-cause variation'; for data points falling outside the control limits, chance is an unlikely explanation and hence they are said to display 'special-cause variation'- that is, where performance diverges significantly from the national rate.

The distinction between control limits and confidence intervals is important; although they are very similar in construction and the difference between the two is subtle. Control limits have been used because they offer hypothesis tests whereas (strictly speaking) confidence intervals do not. Control limits come from the Poisson distribution and are calculated using an exact method using visual basic routines made available by John C Pezzullo (<http://statpages.org/>). For further information, please read David Spiegelhalter's informative paper "Funnel plots for comparing institutional performance". (Stat Med 2005 Apr 30;24(8):1185-202). The Eastern Region Public Health Observatory also has a large resource of relevant information and tools available online ([www.erpho.org.uk](http://www.erpho.org.uk)).

## 6. Changes in 2009

### **Benchmarks**

All benchmarks have been updated and now include values for 2008/09.

### **Diagnosis groups**

- A few ICD10 diagnosis codes have been moved between diagnosis groups. The only code with significant volume is I739 “Peripheral vascular disease, unspecified” which has been shifted from “Other circulatory disease” to “Peripheral and visceral atherosclerosis” - both groups are included in the HSMR.
- In place of DFI’s own sub-groups which were designed specifically for mortality risk adjustment, we have adopted the official Clinical Classification System (CCS) sub-groups which have wider application and overall improve case-mix adjustment (see note below).

### **Charlson comorbidities**

The original Charlson weights were derived about 25 years ago in the USA. We wanted to update them (e.g. HIV had the highest weight then but its mortality has fallen greatly since, particularly in hospitalised patients) and calibrate them on English data due to differences in coding practice and hospital patient population characteristics. We had advice from some clinical coders on current English coding practice and, where possible, also assessed the consistency of comorbidity recording among admissions for the same patient. As a result:-

- We have expanded the coding definition of some conditions such that more patients are identified as having those conditions.
- Only secondary diagnoses (DIAG2-DIAG14) are now considered.
- There is now greater variation in weights between conditions and the Charlson index (the sum of the weights) is treated as a continuous variable (limited to the range 0-50) for the purposes of risk adjustment.

### **Additional variables**

- Risks are adjusted for three additional variables:-
  - Ethnicity (6 categories)
  - Source of admission (7 categories)
  - Month of admission

## 7. Relevant publications

Jarman B, Gault S, Alves B, Hider A, Dolan S, Cook A, Hurwitz B, Iezzoni LI. Explaining Differences in English Hospital Death Rates Using Routinely Collected Data. *BMJ* 1999;318:1515-1520

Bottle A, Aylin P. Intelligent Information: a national system for monitoring clinical performance. *Health Services Research* 2008;43:10-31

Aylin P; Bottle A. Are hospital league tables calculated correctly? A commentary. *Public Health*. (06 Sep 2007).

Aylin P; Bottle A; Majeed A. Use of administrative data or clinical databases as predictors of risk of death in hospital: comparison of models. *BMJ* 2007;334: 1044

Aylin P; Lees T; Baker S; Prytherch D; Ashley S. (2007) Descriptive study comparing routine hospital administrative data with the Vascular Society of Great Britain and Ireland's National Vascular Database. *Eur J Vasc Endovasc Surg* 2007;33:461-465

Bottle A, Aylin P, Majeed A. Identifying patients at high risk of emergency hospital admissions: a logistic regression analysis. *JR Soc Med*, Aug 2006; 99:406-414

Bottle A, Aylin P. Mortality associated with delay in operation after hip fracture: observational study. *BMJ* 2006;332:947-951

Spiegelhalter D. Funnel plots for institutional comparison. *Quality and Safety in Health Care* 2002 Dec;11(4):390-1.

Spiegelhalter DJ. Funnel plots for comparing institutional performance. *Stat Med* 2005 Apr 30;24(8):1185-202.

Vijaya Sundararajan et al. New ICD-10 version of the Charlson Comorbidity Index predicted in-hospital mortality. *Journal of Clinical Epidemiology* 57 (2004) 1288–1294

Carstairs V, Morris R. Deprivation: explaining differences in mortality between Scotland and England and Wales. *BMJ*. 1989 Oct 7;299(6704):886-9

## Appendix A. Charlson comorbidity conditions

The original Charlson weights were derived about 25 years ago in the USA. We wanted to update them (e.g. HIV had the highest weight then but its mortality has fallen greatly since, particularly in hospitalised patients) and calibrate them on English data due to differences in coding practice and hospital patient population characteristics. We had advice from some clinical coders on current English coding practice and, where possible, also assessed the consistency of comorbidity recording among admissions for the same patient. As a result:-

- We have expanded the coding definition of some conditions such that more patients are identified as having those conditions.
- Only secondary diagnoses (DIAG2-DIAG14) are now considered.
- There is now greater variation in weights between conditions and the Charlson index (the sum of the weights) is treated as a continuous variable (limited to the range 0-50) for the purposes of risk adjustment.

Condition No.	Condition Name	New Coding	New Weight	Old Weight
1	Acute myocardial infarction	I21, I22, I23, I252, I258	5	1
2	Cerebral vascular accident	G450, G451, G452, G454, G458, G459, G46, I60-I69	11	1
3	Congestive heart failure	I50	13	1
4	Connective tissue disorder	M05, M060, M063, M069, M32, M332, M34, M353	4	1
5	Dementia	F00, F01, F02, F03, F051	14	1
6	Diabetes	E101, E105, E106, E108, E109, E111, E115, E116, E118, E119, E131, E131, E136, E138, E139, E141, E145, E146, E148, E149	3	1
7	Liver disease	K702, K703, K717, K73, K74	8	1
8	Peptic ulcer	K25, K26, K27, K28	9	1
9	Peripheral vascular disease	I71, I739, I790, R02, Z958, Z959	6	1
10	Pulmonary disease	J40-J47, J60-J67	4	1
11	Cancer	C00-C76, C80-C97	8	2
12	Diabetes complications	E102, E103, E104, E107, E112, E113, E114, E117, E132, E133, E134, E137, E142, E143, E144, E147	-1	2
13	Paraplegia	G041, G81, G820, G821, G822	1	2
14	Renal disease	I12, I13, N01, N03, N052-N056, N072-N074, N18, N19, N25	10	2
15	Metastatic cancer	C77, C78, C79	14	3
16	Severe liver disease	K721, K729, K766, K767	18	3
17	HIV	B20, B21, B22, B23, B24	2	6

## Appendix B. Formula for calculating Carstairs

The formula was used to calculate the Carstairs index for each Output Area (OA) derived from 2001 census within the UK (England, Wales, Scotland, Northern Ireland). The figures were normalised for the UK as a whole. Output areas were allocated into quintiles based on resident population, giving an equal total population in each quintile.

Unemployment variable: table KS0009b – Economic activity – males

unemp: KS09b0005 -> unemployed males over 16

unempd: KS09b0001 -> males over 16

No car variable: table UV062 – Cars or vans

nocar: UV0620002 -> households without a car or van

nocard: UV0620001 -> all households

Overcrowding variable: table UV058 – Persons per room

overcrow: UV0580004 + UV0580005 -> households with over 1.0 persons per room

overcrowd: UV0580001 -> all households

Low social class variable: table UV050 – Approximated social grade

lowclass: UV0500005 + UV0500006 -> number of persons in a grade D or E classified household

lowclasd: UV0500001 -> all people

Calculation:

\* delete all the records with no household residents (Census unit without people)

\* compute proportions:

$$\text{unempp} = (\text{unemp}/\text{unempd}) * 100$$

$$\text{nocarp} = (\text{nocar}/\text{nocard}) * 100$$

$$\text{overcrop} = (\text{overcrow}/\text{overcrowd}) * 100$$

$$\text{lowclasp} = (\text{lowclass}/\text{lowclasd}) * 100$$

\* compute z-values for unempp, nocarp, overcrop, lowclasp

\* Carstairs Index = sum of z-values for the four variables

[Note: The multiplication by 100 is not necessary as it cancels out in the normalisation process]

## Appendix C. Mapping of ICD10 codes to CCS groups

Please refer to the attached spreadsheet



Microsoft Office  
Excel 97-2003 Worksl